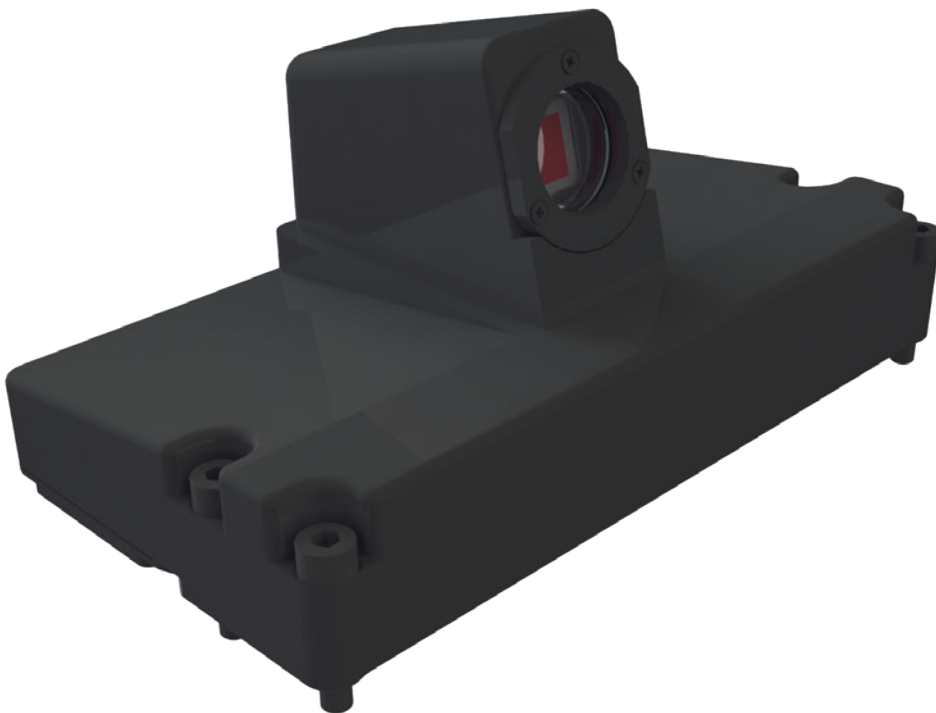


HUD RC-1 CAMERA

For Fighters and Trainers



APPLICATIONS

- Training
- Mission restitution

AIRCRAFTS

- KAI KA-1
- KAI KT-1

INNOVATIONS & FEATURES

- Embedded image enhancement algorithms
- Robustness to direct sun exposure
- No mobile parts for best reliability
- CMOS sensor
- Very low impact for pilot's vision
- Designed for harsh environments

CMOS HUD Camera
**The High-end & Reliable Solution
in Head-up Display Cameras,
for Rear-Combiner Location**

LANDSCAPE ACQUISITION PERFORMANCE

FOV SENSOR LINE OF SIGHT DYNAMIC RANGE	Field of View	Line of Sight Alignment	H,V Roll Error	IFOV
	22.6°(H) × 17°(V) Digitally adjustable	< 1.5 mrad	< 1.5 mrad	< 0.4 mrad
	Sensor	Mono/Color	Time Exposure	Light Dynamic Range
	CMOS QXGA Format	Color RGB	Fixed 20 ms	0.5 to 16,000 fL

VIDEO OPTIMIZATION

WHITE BALANCE COLOR SATURATION GAMMA TIME RESPONSE CORRECTIONS	White Balance	Gamma Correction	Sharpness	Distorsion Correction
	Auto CEI D65 5600 K	0.45 – 0.7 – 1	Manual or automatic	N/A
	Color Saturation	Sensor Correction	AEG AGC Time Response	Non-uniformity Correction
	MCS-ACS	Blemish correction	< 1.5 s	Polynomial

INTERFACE

VIDEO COM POWER SYNCHRO EVENT MARK BIT	Control Interface	Power Supply	TV Standard	Event Mark
	RS485/422 For maintenance	28 Vdc MIL-STD-704E	NTSC,RS170A RGB	28 Vdc
	Connector	Power Consumption	External Synchro	BIT
	MIL-STD-24308 D type – 9 pin male	10 W	N/A	N/A

HOUSING

DIMENSION WEIGHT WINDOW	Size	Coating	Weight	Optical Window
	132 × 72 × 62 mm ³	Paint color – Black	< 600 g	AR Sapphire

ENVIRONMENTAL / CONFORMITY

TEMPERATURE HUMIDITY SHOCKS VIBRATION EMI / EMC CE / IPC	Temperature	Humidity	Shocks	Vibrations
	[-40°C – +71°C] functional	100% MIL-STD-810G	40g half sinus 11 ms	12 g rms [100 Hz – 1,000 Hz]
	EMI MIL-STD-461E	EMI MIL-STD-461E	Grounding	Lightning
	RE 02 RS 02-RS03	CE03-CE07 CS-01-CS02-CS06	< 5 mΩ	N/A
	MTBF	Altitude	Sand and Dust	Salt Atmosphere
	> 8,000 H AIF 30°C MIL HDBK-217F N2	> 30,000 f	MIL-STD-810C	MIL-STD-810C

AIRCRAFT INSTALLATIONS

AIRCRAFT LOCATION	KAI KT/KA-1
	RC: Rear of HUD combiner

PART NUMBER

P/N	S0074013790 Includes: Graphic Unit Interface (GUI)
-----	---

